

The Dwelling Of God Is Among You Today

Revelation 21 adapted by Don Austin, Music by Don Austin

A musical score for a hymn. It consists of ten staves of music in treble clef, with a key signature of two sharps (F# and C#). The time signature is 4/4. The lyrics are written below the notes. Chord symbols are placed above the notes. The lyrics are: "And then I heard a loud voice say, Be-hold, the dwell-ing of God is a-mong you to-day! And He shall wipe a-way your tears; there'll be no mourn-ing, or cry-ing, or pain, or death an-y more! Hal-le-lu-jah! Hal-le-lu-jah! For the Lord God Al-might-y, Om-ni-po-tent reigns! Our might-y God! Our ris-en Lord! All the glo-ry, and ho-nor, and pov-er are Yours ev-er-more! more!"

A D E
And then I heard a loud voice say,

E D A E A E A E F#sus4
Be-hold, the dwell-ing of God is a-mong you to-day!

F#7 D E D
And He shall wipe a-way your tears; there'll be no

A E A E A E A
mourn-ing, or cry-ing, or pain, or death an-y more!

A D
Hal-le-lu-jah! Hal-le-lu-jah!

Bm D A D A D A
For the Lord God Al-might-y, Om-ni-po-tent

Esus4 E A
reigns! Our might-y God! Our ris-en

D Bm D A D A
Lord! All the glo-ry, and ho-nor, and

D A E 1. A 2. D A
pov-er are Yours ev-er-more! more!

E \flat 2

C2/E

F2

D2/F \sharp

G



shout the strong - holds of — Sa - tan come crash - ing down —



Cm

Cm/B \flat

A \flat

E \flat /G

B \flat /F

F/E \flat

Dsus

D



and Bab - y - lon is fall - ing, fall - ing down. — The



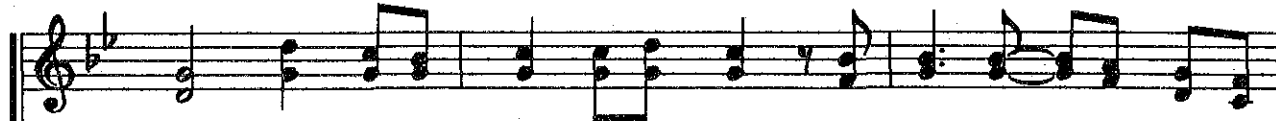
CHORUS

Gm

Cm

E \flat

F



earth shakes at the sound of His voice, the na - tions — trem - bie be -



Gm

E \flat

F

Gm

Cm



fore — Him; The i - dols of men — are all — fall - ing at the



E \flat

F

Gm

Gm/F

E \flat

F



feet of the Lord, — our — God, at the feet of the Lord, — our —

